

Directory of of the Ocean Going Tugs type V4-M-A1

(composed by: Hans van der Ster – Marcol Archief Production)

In 1941 the United States Commission in Washington have prepared plans, specifications and orderings for the construction of a super Ocean Going Tugboat. The plans raised the building of 50 tugs to be built on ten different yards as part of the Second World War effort.

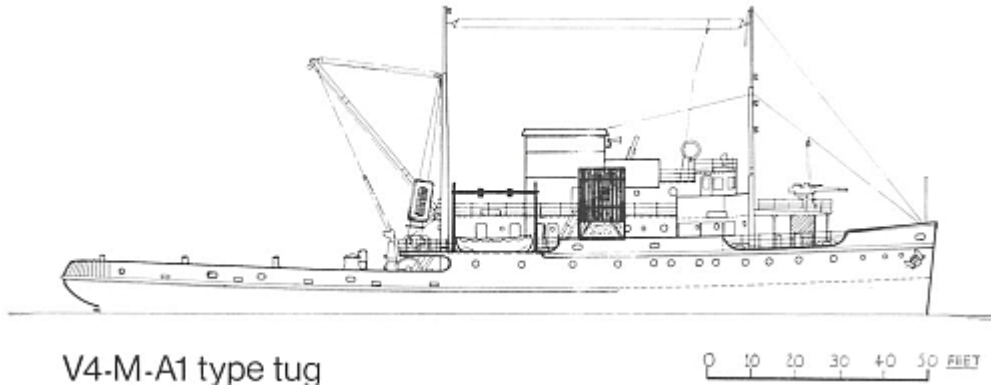


The V4-M-A1 a 186 foot Ocean going tug of which 49 were built on only six yards was the largest V-tug built during World War II. She is built according the specifications of the in 1933 built Dutch tug “Zwarte Zee” of L.Smit & Co’s Internationale Sleepvaart Maatschappij.

Ten of those tugs participated during WWII in towing Phoenixes, Mulberries to the Normandy Coast:

All the ships of this class were named for lighthouses in the U.S., except for the *Great Isaac*, which is in the Bahamas.

Class V4-M-A1



Specifications

| | |
|---------------------|--------------|
| Bruto | 1.117 tons |
| Nett | 251 tons |
| Displacement | 1.613 tons |
| DWT | 625 tons |
| Speed | 14 Knots |
| Range | 19.000 miles |
| Fuel Cap. | 538 tons |

The Shipyards involved in the building of the V4-M-A1 Class tugs are:

- | | | |
|---|----|------|
| 1. General Ship & Engine Works., East Boston MA | 6 | tugs |
| 2. Avondale Marine Ways, New Orleans LA | 8 | tugs |
| 3. Froemming Bros., Milwaukee WI | 8 | tugs |
| 4. Pendleton Ship Yards., New Orleans LA | 9 | tugs |
| 5. Globe Ship Building., Superior WI | 10 | tugs |
| 6. Pennsylvania Ship Yards., Beaumont TX | 8 | tugs |



Building List

General Ship & Engine Works., East Boston MA

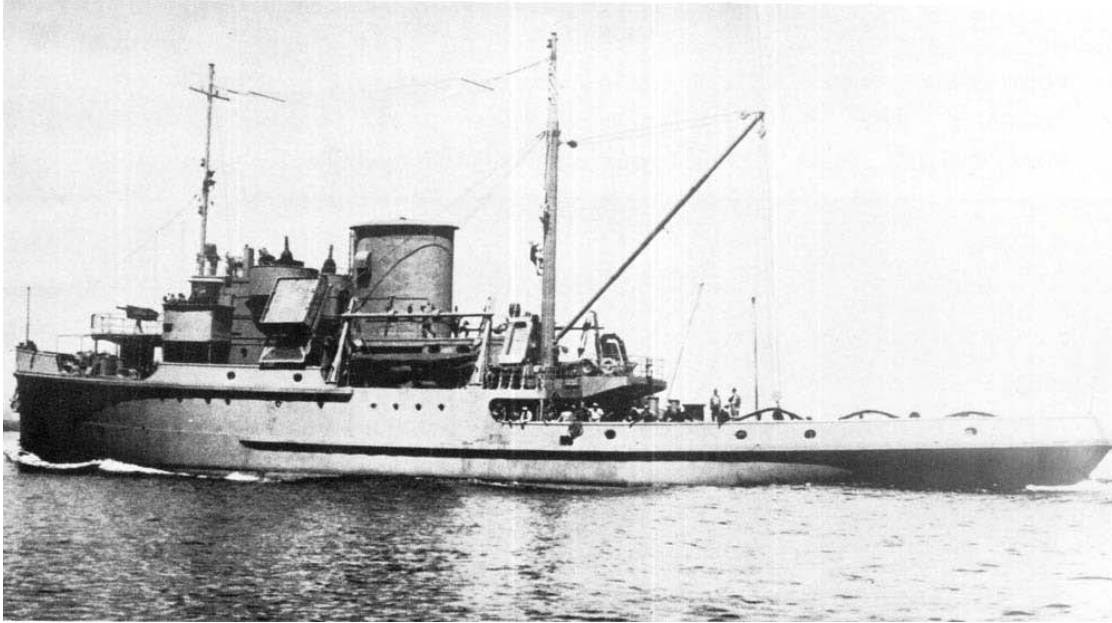
The six V4-M-A1 tugboats built by General Ship & Engine Works. All, except the “Great Isaac” were named for Lighthouses.

Moose Peak

- 1943: Built by "General Ship & Engineering Works" at Boston, Ma.(USA) (YN 405)
- Delivered August 1943 to United States Maritime Commission number 613 – ON244160 c/s KYIL
- 1944 D-Day 6 June operated by **Moran Towing** in the so called Operation Neptune. She towed the components of the artificial harbors from the Atlantic coast to Great Britain, towed portion of the harbors such as the Mulberries from their construction sites to staging areas, and towed the artificial harbors to Normandy. Later, they towed damaged ships to Great Britain for salvage or repair.
- 1966 US Dept. of Commerce at Milwaukee, Wi. c/s WC6334
- 1969 Sold to Mexican Navy, renamed **R4**
- 1974-02-25 Sank off Vera Cruz

Specification:

- **Displacement** 1613 grt
- **Length o.a.** 45.54 x **Beam o.a.** 11.46 x **Draft sides** 5.42 mtrs
- **Speed** .. kts.
- **Propulsion** 1 scr, 2x diesel 4t 8cyl National Superior, 2320bhp total
- **Bollard pull**



Boon Island

- 1943: Built by "General Ship & Engineering Works" at Boston, Ma.(USA) (YN 404)
- Delivered October 1943 to United States Maritime Commission number 614 – ON244458 c/s KTYF
- 195x Transferred to the "US Dept. of Commerce" at Milwaukee, Wis.(USA)
- 1976 Sank while under tow from San Francisco to Tacoma, Wash. off Point Arena, Calif.

Specification:

- **Displacement** 1613 grt
- **Length o.a.** 45.54 x **Beam o.a.** 11.46 x **Draft sides** 5.42 mtrs
- **Speed** .. kts.
- **Propulsion** 1 scr, 2x diesel 4t 8cyl National Superior, 2320bhp total
- **Bollard pull**

Gay Head

- 1943: Built by "General Ship & Engineering Works" at Boston, Ma.(USA) (YN 407)
- Delivered December 1943 to United States Maritime Commission number 615
- 1944 D-Day 6 June operated by **Moran Towing** in the so called Operation Neptune. She towed the components of the artificial harbors from the Atlantic coast to Great Britain, towed portion of the harbors such as the Mulberries from their construction sites to staging areas, and towed the artificial harbors to Normandy. Later, they towed damaged ships to Great Britain for salvage or repair.
- 195x Transferred to the "US Dept. of Commerce" at Milwaukee, Wis.(USA) ON244465 c/s KUCU
- 1975-09-02 to Max Rouse & Sons – Beverly Hills, Calif.
- 1977 Broken up

Specification:

- **Displacement** 1613 grt
- **Length o.a.** 45.54 x **Beam o.a.** 11.46 x **Draft sides** 5.42 mtrs
- **Speed** .. kts.
- **Propulsion** 1 scr, 2x diesel 4t 8cyl National Superior, 2320bhp total
- **Bollard pull**

Bodie Island

- 1943: Built by "General Ship & Engineering Works" at Boston, Ma.(USA) (YN 408)
- Delivered December 1943 to United States Maritime Commission number 616 ON245021 c/s KVVO
- 1944 D-Day 6 June operated by **Moran Towing** in the so called Operation Neptune. She towed the components of the artificial harbors from the Atlantic coast to Great Britain, towed portion of the harbors such as the Mulberries from their construction sites to staging areas, and towed the artificial harbors to Normandy. Later, they towed damaged ships to Great Britain for salvage or repair.
- 194x: transferred to the "US Dept. of Commerce" at Milwaukee, Wis.(USA)
- 1971-10-28 to Union Minerals & Alloys, N.Y.
- 1973-01-03 Broken up at Panama City, Fla.

Specification:

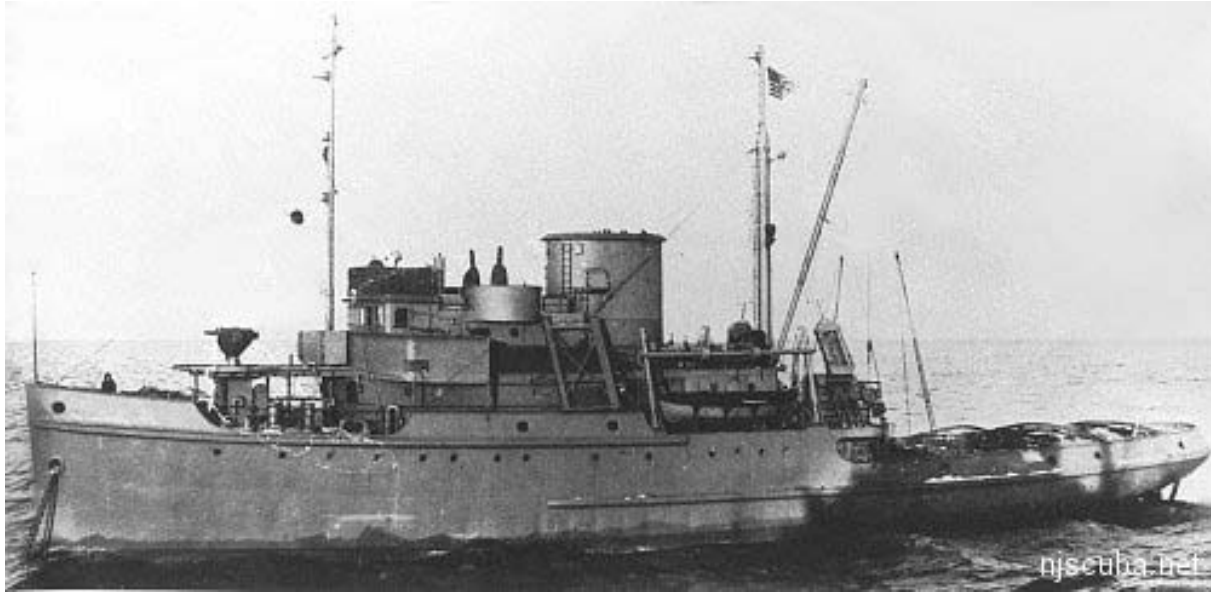
- **Displacement** 1613 grt
- **Length o.a.** 45.54 x **Beam o.a.** 11.46 x **Draft sides** 5.42 mtrs
- **Speed** .. kts.
- **Propulsion** 1 scr, 2x diesel 4t 8cyl National Superior, 2320bhp total
- **Bollard pull**

Great Isaac

- 1944: Built by "General Ship & Engineering Works" at Boston, Mass.(USA) (YN 406)
- Delivered April 1944 to United States Maritime Commission number 617. ON245575 c/s WHIG
- 1944 D-Day 6 June operated by **Moran Towing** in the so called Operation Neptune. She towed the components of the artificial harbors from the Atlantic coast to Great Britain, towed portion of the harbors such as the Mulberries from their construction sites to staging areas, and towed the artificial harbors to Normandy. Later, they towed damaged ships to Great Britain for salvage or repair.
- 1947 April 16, in collision with Norwegian freighter *Bandeirante* – sank when towing Libertyship *Thomas M, Cooley* from Hampton Roads, Va. to New York, off Barnegat Lightvessel, no casualties. The wreck now lies intact on its port side, buried to the mid-line. It is one of the premier wrecks of Southern New Jersey.

Specification:

- **Displacement** 1613 grt
- **Length o.a.** 45.54 x **Beam o.a.** 11.46 x **Draft sides** 5.42 mtrs
- **Speed** .. kts.
- **Propulsion** 1 scr, 2x diesel 4t 8cyl National Superior, 2320bhp total
- **Bollard pull**



Tybee

- 1944: Built by "General Ship & Engineering Works" at Boston, Ma.(USA) (YN 409)
- Delivered May 1944 to United States Maritime Commission number 618 ON245584 c/s WKOU
- 195x: transferred to the "US Dept. of Commerce" at Milwaukee (USA)
- 1967-10-xx to General Metals – Tacoma for scrap.
- 1978 Broken up

Specification:

- **Displacement** 1613 grt
- **Length o.a.** 45.54 x **Beam o.a.** 11.46 x **Draft sides** 5.42 mtrs
- **Speed** .. kts.
- **Propulsion** 1 scr, 2x diesel 4t 8cyl National Superior, 2320bhp total
- **Bollard pull**

Avondale Marine Ways, New Orleans LA

Seguin

- 1942: Built by "Avondale Marine Ways Inc" at Westwego, La.(USA) (YN 40)
- Delivered January 1943 to United States Maritime Commission number 575
- 1976 Broken up at General Metals – Tacoma.

Specification:

- **Displacement** 1613 grt
- **Length o.a.** 45.54 x **Beam o.a.** 11.46 x **Draft sides** 5.42 mtrs
- **Speed** .. kts.
- **Propulsion** 1 scr, 2x diesel 4t 8cyl National Superior, 2320bhp total
- **Bollard pull**

Sand Key

- 1942: Built by "Avondale Marine Ways Inc" at Westwego, La.(USA) (YN 38)
- Delivered March 1943 to United States Maritime Commission number 576. ON 242898 c/s KKQJ
- 19xx: To "US Dept. of Commerce" at Milwaukee, Wis.(USA)
- 1978: Broken up at General Metals – Tacoma.

Specification:

- **Displacement** 1613 grt
- **Length o.a.** 45.54 x **Beam o.a.** 11.46 x **Draft sides** 5.42 mtrs
- **Speed** .. kts.
- **Propulsion** 1 scr, 2x diesel 4t 8cyl National Superior, 2320bhp total
- **Bollard pull**

Sanibel Island

- 1943: Built by "Avondale Marine Ways Inc" at Westwego, La.(USA) (YN 39)
- Delivered April 1943 to United States Maritime Commission number 577. ON243085 c/s KMYX
- 19xx: To "US Dept. of Commerce" at Milwaukee, Wis.(USA)
- 1971-12-08 Broken up at General Metals – Tacoma.

Specification:

- **Displacement** 1613 grt
- **Length o.a.** 45.54 x **Beam o.a.** 11.46 x **Draft sides** 5.42 mtrs
- **Speed** .. kts.
- **Propulsion** 1 scr, 2x diesel 4t 8cyl National Superior, 2320bhp total
- **Bollard pull**

Sabine Pass

- 1943: Built by "Avondale Marine Ways Inc" at Westwego, La.(USA) (YN 37)
- Delivered April 1943 to United States Maritime Commission number 578
- 1944 D-Day 6 June operated by **Moran Towing** in the so called Operation Neptune. She towed the components of the artificial harbors from the Atlantic coast to Great Britain, towed portion of the harbors such as the Mulberries from their construction sites to staging areas, and towed the artificial harbors to Normandy. Later, they towed damaged ships to Great Britain for salvage or repair.
- 19xx (by 1966): To "US Dept. of Commerce" at Milwaukee, Wis.(USA)
- 1976 Broken up at General Metals – Tacoma.

Specification:

- **Displacement** 1613 grt
- **Length o.a.** 45.54 x **Beam o.a.** 11.46 x **Draft sides** 5.42 mtrs
- **Speed** .. kts.
- **Propulsion** 1 scr, 2x diesel 4t 8cyl National Superior, 2320bhp total
- **Bollard pull**

Libby Island

- 1943: Built by "Avondale Marine Ways Inc" at Westwego, La.(USA) (YN 41)
- Built under
- Delivered April 1943 to United States Maritime Commission number 1011. ON 243385 c/s KOKW
- 19xx: To "US Dept. of Commerce" at Milwaukee (USA)
- 1971: sold to ??, laid up at Aberdeen (USA), renamed **Northern Retriever**
- 1978 sold to Dennis Matheson, Seattle
- 2009 Scrapped at Stabbert Yacht and Ship; Ballard (TT&O_31/2009)

Specification:

- **Displacement** 1613 grt
- **Length o.a.** 45.54 x **Beam o.a.** 11.46 x **Draft sides** 5.42 mtrs
- **Speed** .. kts.
- **Propulsion** 1 scr, 2x diesel 4t 8cyl National Superior, 2.320bhp total
- **Bollard pull**





St. Simon

- 1943: Built by "Avondale Marine Ways Inc" at Westwego, La.(USA) (YN 42)
- Delivered April 1943 to United States Maritime Commission number 1012. ON 244162 c/s KYLU
- 19xx: To "US Dept. of Commerce" at Milwaukee, Wis.(USA)
- 1976 Broken up at General Metals – Tacoma.

Specification:

- **Displacement** 1613 grt
- **Length o.a.** 45.54 x **Beam o.a.** 11.46 x **Draft sides** 5.42 mtrs
- **Speed** .. kts.
- **Propulsion** 1 scr, 2x diesel 4t 8cyl National Superior, 2320bhp total
- **Bollard pull**

Petit Manan

- 1943: Built by "Avondale Marine Ways Inc" at Westwego, La.(USA) (YN 43)
- Delivered October 1943 to United States Maritime Commission number 1013. ON244332 c/s KTXK
- 19xx: transferred to the "US Dept. of Commerce" at Milwaukee, Wis.(USA)
- 1976 Broken up at General Metals – Tacoma.

Specification:

- **Displacement** 1613 grt
- **Length o.a.** 45.54 x **Beam o.a.** 11.46 x **Draft sides** 5.42 mtrs
- **Speed** .. kts.
- **Propulsion** 1 scr, 2x diesel 4t 8cyl National Superior, 2320bhp
- **Bollard pull**

Burnt Island

- 1943: Built by "Avondale Marine Ways Inc" at West Wego, La.(USA) (YN 44)
- Delivered October 1943 to United States Maritime Commission number 1014.ON244327 c/s KTXZ
- 194x: transferred to the "US Dept. of Commerce" at Milwaukee, Wis.(USA)
- 1969 Sold to Mexican Navy, renamed **R5**
- 1979 Broken up

Specification:

- **Displacement** 1613 grt
- **Length o.a.** 45.54 x **Beam o.a.** 11.46 x **Draft sides** 5.42 mtrs
- **Speed** .. kts.
- **Propulsion** 1 scr, 2x diesel 4t 8cyl National Superior, 2320bhp
- **Bollard pull**

Froemming Bros., Milwaukee WI

Point Loma

- 1943: Built by "Froemming Bros. Inc" at Milwaukee, Wis.(USA) (YN 1)
- Delivered April 1943 to United States Maritime Commission number 595. ON243000 c/s KMXL
- 19xx: transferred to "US Dept. of Commerce" at Milwaukee, Wis.(USA)
- 1971-12-08 to General Metals – Tacoma.
- 1972 Broken up

Specification:

- **Displacement** 1613 grt
- **Length o.a.** 45.54 x **Beam o.a.** 11.46 x **Draft sides** 5.42 mtrs
- **Speed** .. kts.
- **Propulsion** 1 scr, 2x diesel 4t 6cyl National Superior, 2320bhp total
- **Bollard pull**

Anacapa

- 1943: Built by "Froemming Bros." at Milwaukee, Wis.(USA) (YN 2)
- Delivered May 1943 to United States Maritime Commission number 596. ON242999 c/s KMYF.
- 195x to the "US Dept. of Commerce" at Milwaukee, Wis.(USA) c/s WA2378
- 1971-10-28 to Union Minerals & Alloys, N.Y.
- 1973-05-11 Broken up at Panama City

Specification:

- **Displacement** 1613 grt
- **Length o.a.** 45.54 x **Beam o.a.** 11.46 x **Draft sides** 5.42 mtrs
- **Speed** .. kts.
- **Propulsion** 1 scr, 2x diesel 4t 6cyl National Superior, 2320bhp total
- **Bollard pull**

Point Vicente

- 1943: Built by "Froemming Bros. Inc" at Milwaukee (USA) (YN 3)
- Built under
- Delivered May 1943 to United States Maritime Commission number 597. ON243246 c/s KOFR.
- 19xx: transferred to "US Dept. of Commerce" at Milwaukee, Wis.(USA)
- 1969 Sold to Mexican Navy, renamed **R8**
- 19xx redesignated **Huitilopochtli (A51)**
- Fate Unknown

Specification:

- **Displacement** 1613 grt
- **Length o.a.** 45.54 x **Beam o.a.** 11.46 x **Draft sides** 5.42 mtrs
- **Speed** .. kts.
- **Propulsion** 1 scr, 2x diesel 4t 6cyl National Superior, 2320bhp total
- **Bollard pull**

Point Arguello

- 1943: Built by "Froemming Bros. Inc" at Milwaukee (USA) (YN 4).
- Delivered June 1943 to United States Maritime Commission number 598. ON243245 c/s KOFU
- 19xx: transferred to "US Dept. of Commerce" at Milwaukee, Wis.(USA)
- 1971-10-07 to Zidels, Portland, Ore.
- 1973-05-10 Demolition completed

Specification:

- **Displacement** 1613 grt
- **Length o.a.** 45.54 x **Beam o.a.** 11.46 x **Draft sides** 5.42 mtrs
- **Speed** .. kts.
- **Propulsion** 1 scr, 2x diesel 4t 6cyl National Superior, 2320bhp total
- **Bollard pull**

Sankaty Head

- 1943: Built by "Froemming Bros. Inc" at Milwaukee, Wis.(USA) (YN 5)
- Delivered July 1943 to United States Maritime Commission number 895. ON243387 c/s KOKG
- 1944 D-Day 6 June operated by **Moran Towing** in the so called Operation Neptune. She towed the components of the artificial harbors from the Atlantic coast to Great Britain, towed portion of the harbors such as the Mulberries from their construction sites to staging areas, and towed the artificial harbors to Normandy. Later, they towed damaged ships to Great Britain for salvage or repair.
- 19xx To "US Dept. of Commerce" at Milwaukee, Wis.(USA)
- 1976-10-xx Broken up at General Metals – Tacoma.

Specification:

- **Displacement** 1613 grt
- **Length o.a.** 45.54 x **Beam o.a.** 11.46 x **Draft sides** 5.42 mtrs
- **Speed** .. kts.
- **Propulsion** 1 scr, 2x diesel 4t 8cyl National Superior, 2320bhp total
- **Bollard pull**

Yaquina Head

- 1943: Built by "Froemming Bros. Inc" at Milwaukee, Wis.(USA) (YN 6)
- Delivered August 1943 to United States Maritime Commission number 896. ON243389 c/s KOKK
- 195x: transferred to the "US Dept. of Commerce" at Milwaukee, Wis.(USA)
- 1971-12-08 Sold to D.Logan – Bellevue, Wash. for scrap

Specification:

- **Displacement** 1613 grt
- **Length o.a.** 45.54 x **Beam o.a.** 11.46 x **Draft sides** 5.42 mtrs
- **Speed** .. kts.
- **Propulsion** 1 scr, 2x diesel 4t 8cyl National Superior, 2320bhp total
- **Bollard pull**

Bald Head Island

- 1943: Built by "Froemming Bros. Inc" at Milwaukee, Wis.(USA) (YN 7)
- Delivered September 1943 to United States Maritime Commission number 897
- 195x: transferred to the "US Dept. of Commerce" at Milwaukee, Wis.(USA)
- 1971-10-28 to Union Mineral & Alloys, N.Y.
- 1973-01-03 Broken up at Panama City, Fla.

Specification:

- **Displacement** 1613 grt
- **Length o.a.** 45.54 x **Beam o.a.** 11.46 x **Draft sides** 5.42 mtrs
- **Speed** .. kts.
- **Propulsion** 1 scr, 2x diesel 4t 8cyl National Superior, 2320bhp total
- **Bollard pull**

Fire Island

- 1943: Built by "Froemming Bros." at Milwaukee, Wis.(USA) (YN 8)
- Delivered September 1943 to United States Maritime Commission number 898. ON243531 c/s KORU.
- 195x: transferred to the "US Dept. of Commerce" at Milwaukee, Wis.(USA). c/s WB8871
- 1972 -12-xx Broken up at Andys Int. – Brownsville, Tex.

Specification:

- **Displacement** 1613 grt
- **Length o.a.** 45.54 x **Beam o.a.** 11.46 x **Draft sides** 5.42 mtrs
- **Speed** .. kts.
- **Propulsion** 1 scr, 2x diesel 4t 8cyl National Superior, 2320bhp total
- **Bollard pull**

Pendleton Ship Yards., New Orleans LA

Matagorda

- 1943: Built by "Pendleton Shipyard Co" at New Orleans, La.(USA) (YN 101)
- Delivered May 1943 to United States Maritime Commission number 607. ON243244
- 1946-02-17 Sank

Specification:

- **Displacement** 1613 grt
- **Length o.a.** 45.54 x **Beam o.a.** 11.46 x **Draft sides** 5.42 mtrs
- **Speed** .. kts.
- **Propulsion** 1 scr, 2x diesel 4t 6cyl Enterprise, 2340bhp total, sp 15kn
- **Bollard pull**

Aransas Pass

- 1943: Built by "Pendleton Shipyard Co" at New Orleans, La.(USA) (YN 102)
- Delivered June 1943 to United States Maritime Commission number 608. ON243293 c/s KIGH.
- 195x: transferred to the "US Dept. of Commerce" at Milwaukee, Wis.(USA)
- 1971-12-08 to Zidells – Tacoma. Wash. for scrap.
- 1973 Broken up

Specification:

- **Displacement** 1613 grt

- **Length o.a.** 45.54 x **Beam o.a.** 11.46 x **Draft sides** 5.42 mtrs
- **Speed** .. kts.
- **Propulsion** 1 scr, 2x diesel 4t 6cyl Enterprise, 2340bhp total, sp 15kn
- **Bollard pull**

Sombrero Key

- 1943: Built by "Pendleton Shipyard Co" at New Orleans, La.(USA) (YN 103)
- Delivered June 1943 to United States Maritime Commission number 609. ON243664 c/s KFXQ
- 1965: To the Argentinian Government at Buenos Aires (ARG), renamed **ARA-THOMPSON**
- 1980 Renamed **Thompson**
- Fate unknown, said to be broken up

Specification:

- **Displacement** 1613 grt
- **Length o.a.** 45.54 x **Beam o.a.** 11.46 x **Draft sides** 5.42 mtrs
- **Speed** .. kts.
- **Propulsion** 1 scr, 2x diesel 4t 6cyl Enterprise, 2340bhp total, sp 15kn
- **Bollard pull**

Dry Tortugas

- 1943: Built by "Pendleton Shipyard Co" at New Orleans, La.(USA) (YN 104)
- Delivered July 1943 to United States Maritime Commission number 610. ON243745 c/s KBZM
- 1965: To the Argentinian Government at Buenos Aires (ARG), renamed **ARA-GOYENA**
- 1980 Renamed **Goyena**
- Fate unknown, said to be broken up

Specification:

- **Displacement** 1613 grt
- **Length o.a.** 45.54 x **Beam o.a.** 11.46 x **Draft sides** 5.42 mtrs
- **Speed** .. kts.
- **Propulsion** 1 scr, 2x diesel 4t 6cyl Enterprise, 2340bhp total, sp 15kn
- **Bollard pull**



ARA Goyena

Southwest Pass

- 1943: Built by "Pendleton Shipyard Co" at New Orleans, La.(USA) (YN 105)
- Delivered August 1943 to United States Maritime Commission number 611. ON243920 c/s KYAM
- 19xx : transferred to "US Dept. of Commerce" at Milwaukee, Wis.(USA)
- 1971 to Union Minerals & Alloys, N.Y.
- 1973 Broken up at Panama City, Fla.

Specification:

- **Displacement** 1613 grt
- **Length o.a.** 45.54 x **Beam o.a.** 11.46 x **Draft sides** 5.42 mtrs
- **Speed** .. kts.
- **Propulsion** 1 scr, 2x diesel 4t 6cyl Enterprise, 2340bhp total, sp 15kn
- **Bollard pull**

Montauk Point

- 1943: Built by "Pendleton Shipyard Co" at New Orleans, La.(USA) (YN 106)
- Delivered September 1943 to United States Maritime Commission number 612. ON244012 c/s KYFW
- 19xx: To "US Dept. of Commerce" at Milwaukee, Wis.(USA)
- 1973 to Mexican Navy, renamed **R2**
- 19xx redesignated **Quetzalcoatl (A12)**
- Fate Unknown

Specification:

- **Displacement** 1613 grt
- **Length o.a.** 45.54 x **Beam o.a.** 11.46 x **Draft sides** 5.42 mtrs
- **Speed** .. kts.
- **Propulsion** 1 scr, 2x diesel 4t 6cyl Enterprise, 2340bhp total
- **Bollard pull**

Bayou St. John

- 1943: Built by "Pendleton Shipyard Co" at New Orleans, La.(USA) (YN 107)
- Delivered November 1943 to United States Maritime Commission number 1281. ON244128 c/s KYID
- 195x: transferred to the "US Dept. of Commerce" at Milwaukee, Wis.(USA)
- 1975-07-07 to American Ship Dismantlers – Portland, Ore.
- 1978 Demolition completed

Specification:

- **Displacement** 1613 grt
- **Length o.a.** 45.54 x **Beam o.a.** 11.46 x **Draft sides** 5.42 mtrs
- **Speed** .. kts.
- **Propulsion** 1 scr, 2x diesel 4t 6cyl Enterprise, 2340bhp total
- **Bollard pull**

Mobile Point

- 1943: Built by "Pendleton Shipyard Co" at New Orleans, La.(USA) (YN 108)
- Delivered December 1943 to United States Maritime Commission number 1282
- 194412-23 Lost in collision with British Beaton Park off California coast

Specification:

- **Displacement** 1613 grt
- **Length o.a.** 45.54 x **Beam o.a.** 11.46 x **Draft sides** 5.42 mtrs
- **Speed** .. kts.

- **Propulsion** 1 scr, 2x diesel 4t 6cyl Enterprise, 2340bhp total
- **Bollard pull**

Race Point

- 1943: Built by "Pendleton Shipyard Co" at New Orleans, La.(USA) (YN 109)
- Built under
- Delivered February 1944 to United States Maritime Commission number 1283. ON244485 c/s KUDX
- 19xx: transferred to the "US Dept. of Commerce" at Milwaukee, Wis.(USA)
- 1971-10-28 to Union Minerals & Alloys. N.Y. for scrap
- 1972 Demolition completed

Specification:

- **Displacement** 1613 grt
- **Length o.a.** 45.54 x **Beam o.a.** 11.46 x **Draft sides** 5.42 mtrs
- **Speed** .. kts.
- **Propulsion** 1 scr, 2x diesel 4t 8cyl National Superior, 2340bhp total
- **Bollard pull**

Globe Ship Building., Superior WI

Point Sur

- 1943: Built by "Globe Shipbuilding Co" at Superior, Min.(USA) (YN 100)
- Delivered May 1943 to United States Maritime Commission number 624. ON243570 c/s KOIU
- 19xx: transferred to "US Dept. of Commerce" at Milwaukee, Wis.(USA)
- 1974-12-xx Sold to Andy International – Brownsville; Broken up

Specification:

- **Displacement** 1613 grt
- **Length o.a.** 45.54 x **Beam o.a.** 11.46 x **Draft sides** 5.42 mtrs
- **Speed** .. kts.
- **Propulsion** 1 scr, 2x diesel 4t 6cyl Enterprise, 2340bhp total
- **Bollard pull**

Farallon

- 1943: Built by "Globe Shipbuilding Co" at Superior, Wis.(USA) (YN 101)
- Delivered June 1943 to United States Maritime Commission number 625. ON243655 c/s KOPA
- 1944 D-Day 6 June operated by **Moran Towing** in the so called Operation Neptune. She towed the components of the artificial harbors from the Atlantic coast to Great Britain, towed portion of the harbors such as the Mulberries from their construction sites to staging areas, and towed the artificial harbors to Normandy. Later, they towed damaged ships to Great Britain for salvage or repair.
- 194x: transferred to the "US Dept. of Commerce" at Milwaukee (USA)
- 1969 Sold to Mexican Navy, designated **R1**
- 1978 Broken up

Specification:

- **Displacement** 1613 grt
- **Length o.a.** 45.54 x **Beam o.a.** 11.46 x **Draft sides** 5.42 mtrs
- **Speed** .. kts.
- **Propulsion** 1 scr, 2x diesel 4t 6cyl Enterprise, 2340bhp total
- **Bollard pull**

Point Cabrillo

- 1943: Built by "Globe Shipbuilding Co" at Superior, Min.(USA) (YN 102)
- Delivered June 1943 to United States Maritime Commission number 626. ON243662 c/s KXFK
- 19xx: transferred to "US Dept. of Commerce" at Milwaukee, Wis.(USA)
- 1974-10-03 Sold to ships Inc. – Camden; Broken up

Specification:

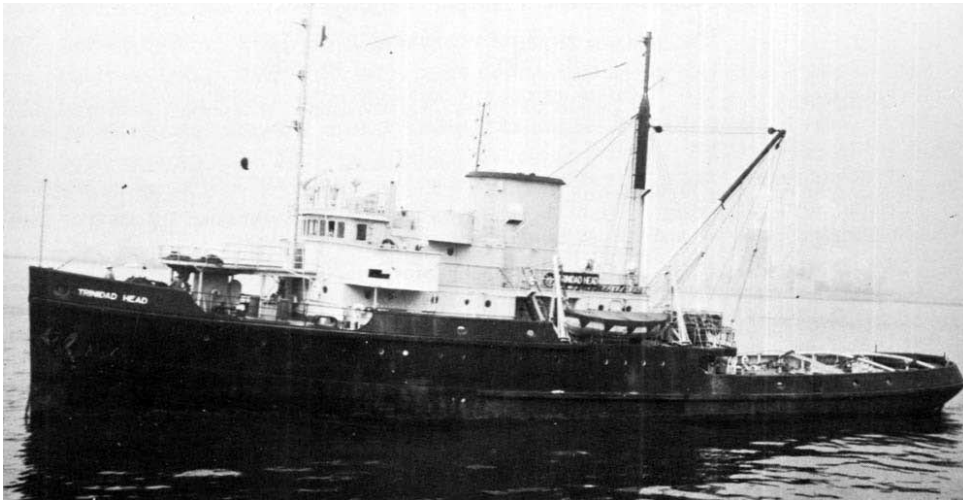
- **Displacement** 1613 grt
- **Length o.a.** 45.54 x **Beam o.a.** 11.46 x **Draft sides** 5.42 mtrs
- **Speed** .. kts.
- **Propulsion** 1 scr, 2x diesel 4t 6cyl Enterprise, 2340bhp total
- **Bollard pull**

Trinidad Head

- 1943: Built by "Globe Shipbuilding Co" at Superior, Minn.(USA) (YN 103)
- Delivered July 1943 to United States Maritime Commission number 627. ON243884 c/s KXCV
- 1944 D-Day 6 June operated by **Moran Towing** in the so called Operation Neptune. She towed the components of the artificial harbors from the Atlantic coast to Great Britain, towed portion of the harbors such as the Mulberries from their construction sites to staging areas, and towed the artificial harbors to Normandy. Later, they towed damaged ships to Great Britain for salvage or repair.
- 195x: transferred to the "US Dept. of Commerce" at Milwaukee (USA)
- 1968-03-xx Sold to Union Minerals & Alloys for scrap
- 1969 Broken up

Specification:

- **Displacement** 1613 grt
- **Length o.a.** 45.54 x **Beam o.a.** 11.46 x **Draft sides** 5.42 mtrs
- **Speed** .. kts. **Propulsion** 1 scr, 2x diesel 4t 6cyl Enterprise, 2340bhp total
- **Bollard pull**



Trinidad Head at New York

Scotch Cap

- 1943: Built by "Globe Shipbuilding Co" at Superior, MN.(USA) (YN 104)
- Delivered July 1943 to United States Maritime Commission number 628. ON243883 c/s KXWS
- 19xx: transferred to the "US Dept. of Commerce" at Milwaukee, Wis. USA

- 1978 to reserve fleet - Beamont
- 19xx Broken up

Specification:

- **Displacement** 1613 grt
- **Length o.a.** 45.54 x **Beam o.a.** 11.46 x **Draft sides** 5.42 mtrs
- **Speed** .. kts.
- **Propulsion** 1 scr, 2x diesel 4t 6cyl Enterprise, 2340bhp total
- **Bollard pull**

Watch Hill

- 1943: Built by "Globe Shipbuilding Co" at Superior, Wis.(USA) (YN 105)
- Delivered October 1943 to United States Maritime Commission number 886
- 194x: chartered by "Moran Towing and Transportation Co Inc" at New York (USA)
- 1949: returned to "USMC - US Maritime Commission" at Norfolk, Va.(USA) ON243932 c/s KYEK
- 195x: transferred to the "US Dept. of Commerce" at Milwaukee (USA)
- 1971-10-28 Sold to Union Minerals & Alloys – New York for scrap
- 1973 Broken up

Specification:

- **Displacement** 1613 grt
- **Length o.a.** 45.54 x **Beam o.a.** 11.46 x **Draft sides** 5.42 mtrs
- **Speed** .. kts.
- **Propulsion** 1 scr, 2x diesel 4t 6cyl Enterprise, 2340bhp total
- **Bollard pull**

Wood Island

- 1943: Built by "Globe Shipbuilding Co" at Superior, Wis.(USA) (YN 106)
- Delivered September 1943 to United States Maritime Commission number 887. ON243933 c/s KYEL
- 195x: transferred to the "US Dept. of Commerce" at Milwaukee (USA)
- 1971-12-08nSold to Hatch & Kirk - Seattle
- 1974 Broken up on the Dawanish River

Specification:

- **Displacement** 1613 grt
- **Length o.a.** 45.54 x **Beam o.a.** 11.46 x **Draft sides** 5.42 mtrs
- **Speed** .. kts.
- **Propulsion** 1 scr, 2x diesel 4t 6cyl Enterprise, 2340bhp total
- **Bollard pull**

Sands Point

- 1943: Built by "Globe Shipbuilding Co" at Superior, MN.(USA) (YN 107)
- Delivered October 1943 to United States Maritime Commission number 888. ON243928
- 19xx: To "US Dept. of Commerce" at Milwaukee (USA). c/s WB2478
- 1978 to reserve fleet - Beamont
- 1982 Broken up

Specification:

- **Displacement** 1613 grt
- **Length o.a.** 45.54 x **Beam o.a.** 11.46 x **Draft sides** 5.42 mtrs
- **Speed** .. kts.
- **Propulsion** 1 scr, 2x diesel 4t 6cyl Enterprise, 2340bhp total

- **Bollard pull**

Point Judith

- 1943: Built by "Globe Shipbuilding Co" at Superior, Min.(USA) (YN 108)
- Delivered November 1943 to United States Maritime Commission number 889. ON243927 c/s KYEG
- 19xx: transferred to "US Dept. of Commerce" at Milwaukee, Wis.(USA)
- 1978 Broken up at General Metals - Tacoma

Specification:

- **Displacement** 1613 grt
- **Length o.a.** 45.54 x **Beam o.a.** 11.46 x **Draft sides** 5.42 mtrs
- **Speed** .. kts.
- **Propulsion** 1 scr, 2x diesel 4t 6cyl Enterprise, 2340bhp total
- **Bollard pull**

Black Rock

- 1943: Built by "Globe Shipbuilding Co" at Superior, Mn.(USA) (YN 109)
- Built under
- Delivered November 1943 to United States Maritime Commission number 890. ON243925 c/s KYEF
- 1944 D-Day 6 June operated by **Moran Towing** in the so called Operation Neptune. She towed the components of the artificial harbors from the Atlantic coast to Great Britain, towed portion of the harbors such as the Mulberries from their construction sites to staging areas, and towed the artificial harbors to Normandy. Later, they towed damaged ships to Great Britain for salvage or repair.
- 195x: transferred to "US Dept. of Commerce" at Milwaukee, Wis.(USA)
- 1968 to Union Minerals & Alloys – New York for scrap
- 1969 Broken up

Specification:

- **Displacement** 1613 grt
- **Length o.a.** 45.54 x **Beam o.a.** 11.46 x **Draft sides** 5.42 mtrs
- **Speed** .. kts.
- **Propulsion** 1 scr, 2x diesel 4t 6cyl Enterprise, 2340bhp total
- **Bollard pull**



Black Rock at Montreal

Pennsylvania Ship Yards., Beaumont TX

Stratford Point

- 1943: Built by "Pennsylvania Shipyards Inc" at Beaumont, Tx.(USA) (YN 276)
- Delivered June 1943 to United States Maritime Commission number 1145. ON243388 c/s KOKI
- 19xx: transferred to "US Dept. of Commerce" at Milwaukee, Wis.(USA)
- 1976-10-xx to General metals – Tacoma for scrap
- 1978 Broken up

Specification:

- **Displacement** 1613 grt
- **Length o.a.** 45.54 x **Beam o.a.** 11.46 x **Draft sides** 5.42 mtrs
- **Speed** .. kts.
- **Propulsion** 1 scr, 2x diesel 4t 8cyl National Superior, 2320bhp total
- **Bollard pull**

Two Harbors

- 1943: Built by "Pennsylvania Shipyards Inc" at Beaumont, Tx.(USA) (YN 277)
- Built under
- Delivered July 1943 to United States Maritime Commission number 1146. ON243823 c/s KXUX
- 195x: transferred to the "US Dept. of Commerce" at Milwaukee (USA)
- 1971-10-28 to Union Minerals & Alloys for scrap
- 1972 Broken up

Specification:

- **Displacement** 1613 grt
- **Length o.a.** 45.54 x **Beam o.a.** 11.46 x **Draft sides** 5.42 mtrs
- **Speed** .. kts.
- **Propulsion** 1 scr, 2x diesel 4t 6cyl Enterprise, 2340bhp total
- **Bollard pull**

White Shoal

- 1943: Built by "Pennsylvania Shipyards Inc" at Beaumont, Tx.(USA) (YN 278)
- Delivered August 1943 to United States Maritime Commission number 1147
- 194x: transferred to the "US Dept. of Commerce" at Milwaukee, Wis.(USA) (USMC #1147)
- 194x: To "Panama Oceanic Lines Inc" at Beaumont, Tx.(USA). ON243844 c/s KXVI
- 1975-07-11 Sold to Worls Wide Resources – Irvine
- 1978 still afloat as a barge
- Fate unknown, said to be broken up

Specification:

- **Displacement** 1613 grt
- **Length o.a.** 45.54 x **Beam o.a.** 11.46 x **Draft sides** 5.42 mtrs
- **Speed** .. kts.
- **Propulsion** 1 scr, 2x diesel 4t 8cyl National Superior, 2320bhp total
- **Bollard pull**

Cubits Gap

- 1943: Built by "Pennsylvania Shipyards Inc" at Beaumont, Tx.(USA) (YN 279)
- Delivered August 1943 to United States Maritime Commission number 1148. ON243829 c/s KXVE

- 194x: transferred to the "US Dept. of Commerce" at Milwaukee, Wis.(USA)
- 1976-08-xx to General Metals – Tacoma for scrap. Broken up

Specification:

- **Displacement** 1613 grt
- **Length o.a.** 45.54 x **Beam o.a.** 11.46 x **Draft sides** 5.42 mtrs
- **Speed** .. kts.
- **Propulsion** 1 scr, 2x diesel 4t 6cyl Enterprise, 2340bhp total
- **Bollard pull**

Hillsboro Inlet

- 1943: Built by "Pennsylvania Shipyards Inc" at Beaumont, Tx.(USA) (YN 280)
- Built under
- Delivered September 1943 to United States Maritime Commission number 1149. ON244040 c/s KYGD
- 1944 D-Day 6 June operated by **Moran Towing** in the so called Operation Neptune. She towed the components of the artificial harbors from the Atlantic coast to Great Britain, towed portion of the harbors such as the Mulberries from their construction sites to staging areas, and towed the artificial harbors to Normandy. Later, they towed damaged ships to Great Britain for salvage or repair.
- 195x: transferred to the "US Dept. of Commerce" at Milwaukee (USA)
- 1976-10-xx to General Metals – Tacoma for scrap
- 1977 Broken up

Specification:

- **Displacement** 1613 grt
- **Length o.a.** 45.54 x **Beam o.a.** 11.46 x **Draft sides** 5.42 mtrs
- **Speed** .. kts.
- **Propulsion** 1 scr, 2x diesel 4t 8cyl National Superior, 2320bhp total
- **Bollard pull**

Jupiter Inlet

- 1943: Built by "Pennsylvania Shipyards Inc" at Beaumont, Tx.(USA) (YN 281)
- Delivered December 1943 to United States Maritime Commission number 1150. ON244046 c/s KYGE
- 194x: transferred to the "US Dept. of Commerce" at Milwaukee, Wis.(USA)
- 1971-10-07 Sold to D.Logan Seattle. DuPont purchased her from Logan and uses her as an explosive storage barge at Ketchikan - Alaska
- Fate unknown, said to be broken up

Specification:

- **Displacement** 1613 grt
- **Length o.a.** 45.54 x **Beam o.a.** 11.46 x **Draft sides** 5.42 mtrs
- **Speed** .. kts.
- **Propulsion** 1 scr, 2x diesel 4t 6cyl Enterprise, 2340bhp total
- **Bollard pull**

Pigeon Point

- 1943: Built by "Pennsylvania Shipyards Inc" at Beaumont, Tx.(USA) (YN 282)
- Delivered September 1943 to United States Maritime Commission number 1151. ON244047 c/s KYGF
- 19xx (by 1966): transferred to the "US Dept. of Commerce" at Milwaukee, Wis.(USA)
- 1969 Sold to Mexican Navy, designated **R6**
- 1970 Broken up

Specification:

- **Displacement** 1613 grt
- **Length o.a.** 45.54 x **Beam o.a.** 11.46 x **Draft sides** 5.42 mtrs
- **Speed** .. kts.
- **Propulsion** 1 scr, 2x diesel 4t 8cyl National Superior, 2320bhp total
- **Bollard pull**

Point Arena

- 1943: Built by "Pennsylvania Shipyards Inc" at Beaumont, Tx.(USA) (YN 283)
- Delivered December 1943 to United States Maritime Commission number 1152. ON244048 c/s KYGI
- 19xx: transferred to "US Dept. of Commerce" at Milwaukee, Wis.(USA)
- 1976-10-xx: to General Metals – Tacoma for scrap. Broken up

Specification:

- **Displacement** 1613 grt
- **Length o.a.** 45.54 x **Beam o.a.** 11.46 x **Draft sides** 5.42 mtrs
- **Speed** .. kts.
- **Propulsion** 1 scr, 2x diesel 4t 8cyl National Superior, 2320bhp total
- **Bollard pull**